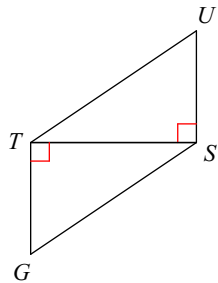
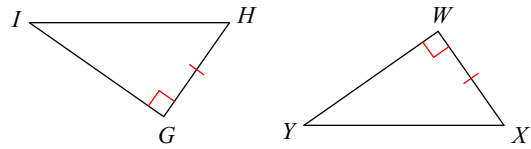


**State what additional information is required in order to know that the triangles are congruent for the reason given.**

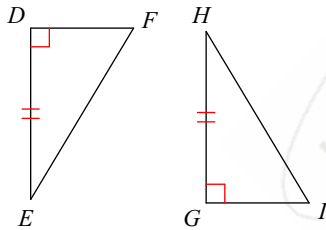
1) LA



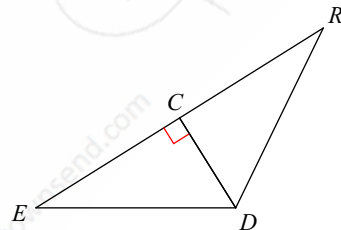
2) HL



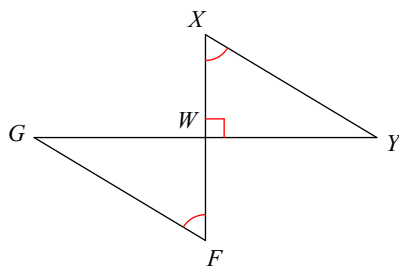
3) LL



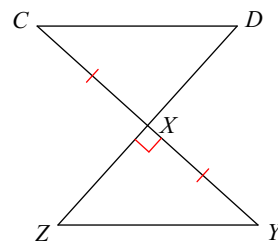
4) LA



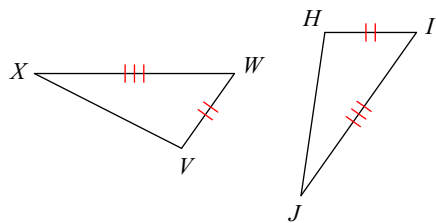
5) HA



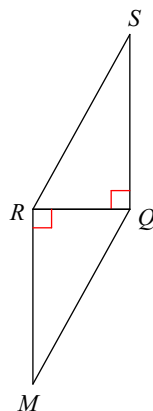
6) LL



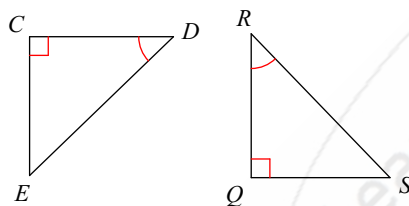
7) SSS



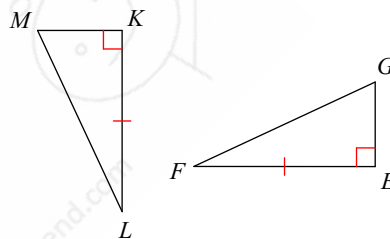
8) LA



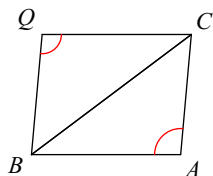
9) HA



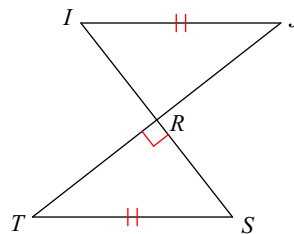
10) LL



11) AAS



12) HL



## Answers to

- 1)  $\angle STU \cong \angle TSG$  or  $\angle U \cong \angle G$       2)  $\overline{HI} \cong \overline{XY}$       3)  $\overline{FD} \cong \overline{IG}$   
4)  $\angle CDE \cong \angle CDR$  or  $\angle E \cong \angle R$       5)  $\overline{XY} \cong \overline{FG}$       6)  $\overline{ZX} \cong \overline{DX}$   
7)  $\overline{XV} \cong \overline{JH}$       8)  $\angle QRS \cong \angle RQM$  or  $\angle S \cong \angle M$       9)  $\overline{DE} \cong \overline{RS}$   
10)  $\overline{MK} \cong \overline{GE}$       11)  $\angle ABC \cong \angle QCB$  or  $\angle BCA \cong \angle CBQ$   
12)  $\overline{RS} \cong \overline{RI}$  or  $\overline{TR} \cong \overline{JR}$

